

Home Access: Remote Desktop

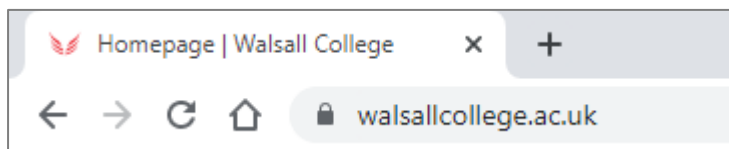
This guide is designed to help you connect to the Walsall College network via a Windows PC or laptop.

Using '**Remote Desktop**' allows you to connect to the college network and access your home folder and files as well as select college software. You are NOT required to use '**Home Access**' to login to Moodle, to access Moodle use the following link; Moodle (<https://moodle.walsallcollege.ac.uk/>)

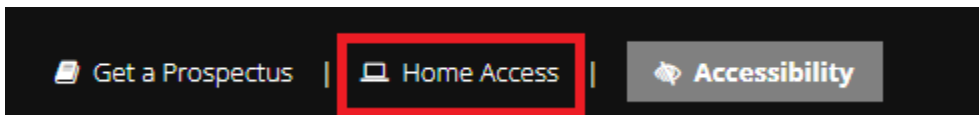
Open up your web browser e.g. Google Chrome, Firefox, Opera etc.



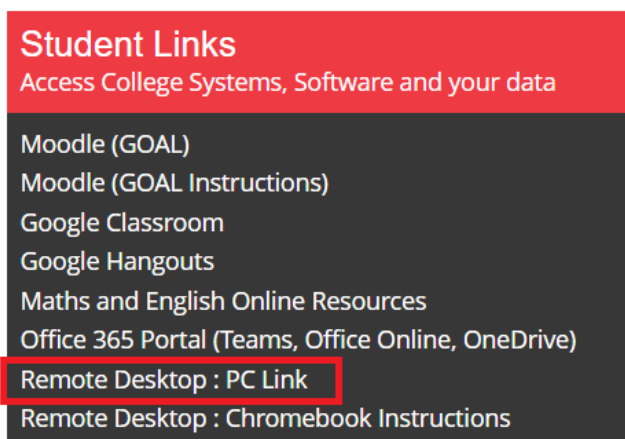
In the address bar enter the college website address <https://www.walsallcollege.ac.uk/> or search for Walsall College.



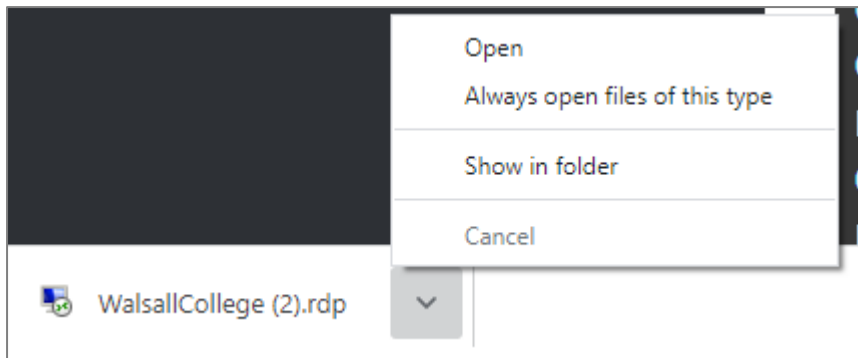
Once you are on the Walsall College website, in the top menu bar or at very bottom of the page find and click on '**Home Access**' link.



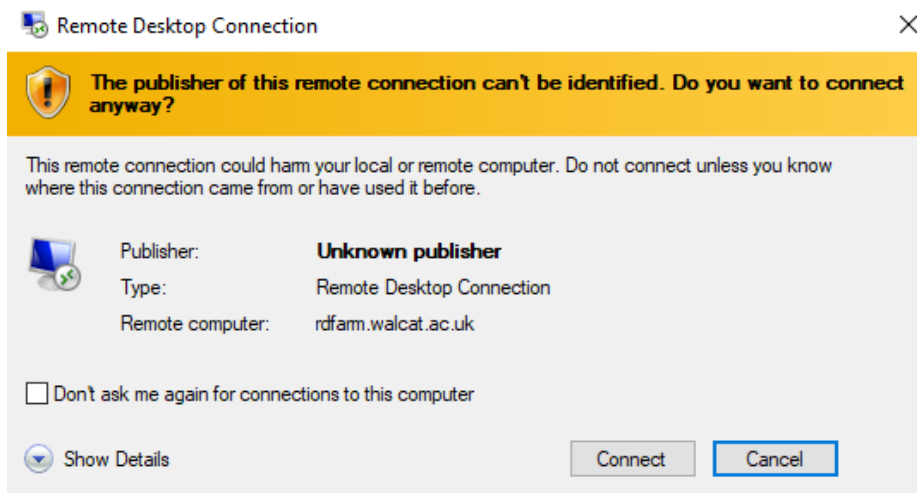
On the Home Access page select the '**Remote Desktop: PC Link**' link.



Depending on which browser you are using, at the bottom of the screen an option to '**Open**' or '**Save**' will appear.



Once you have opened the link you will be prompted to **'Connect'** to the server.



From here you will be asked to login using your college username and password. Your username is your college ID number e.g. 1012345 and your password is your date of birth in an 8-digit format e.g. 25121999 (if your date of birth was 25th December 1999).



Once complete you will be logged onto your college account with access to all of your files and select college software.

Staff Users

Please note that staff users will be asked to enter their Multifactor Authentication (**MFA**) token. If you have not already set up MFA on your mobile device you will need to do this while on-campus using the link on the Staff Portal.